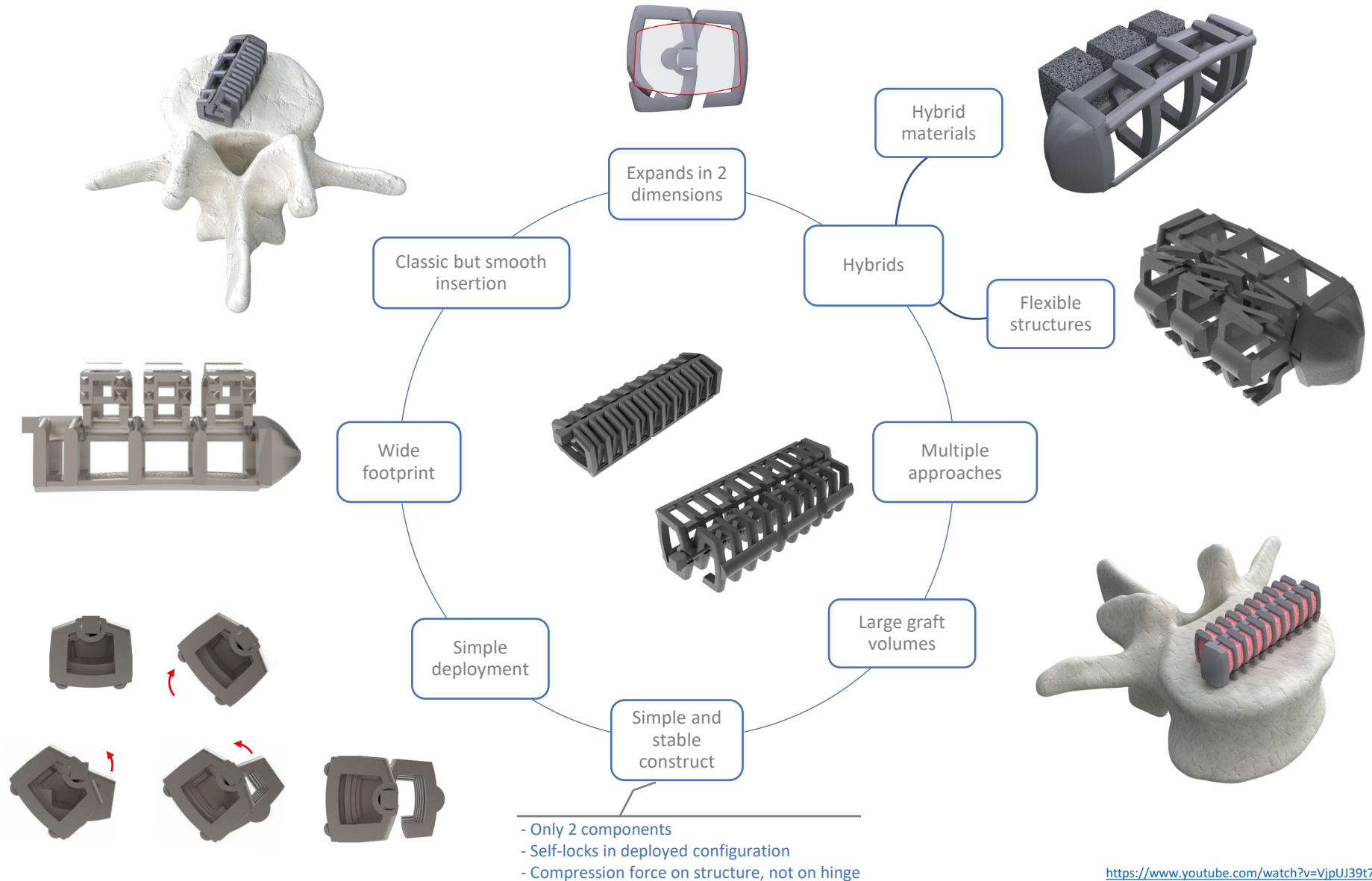


The DUO Cages

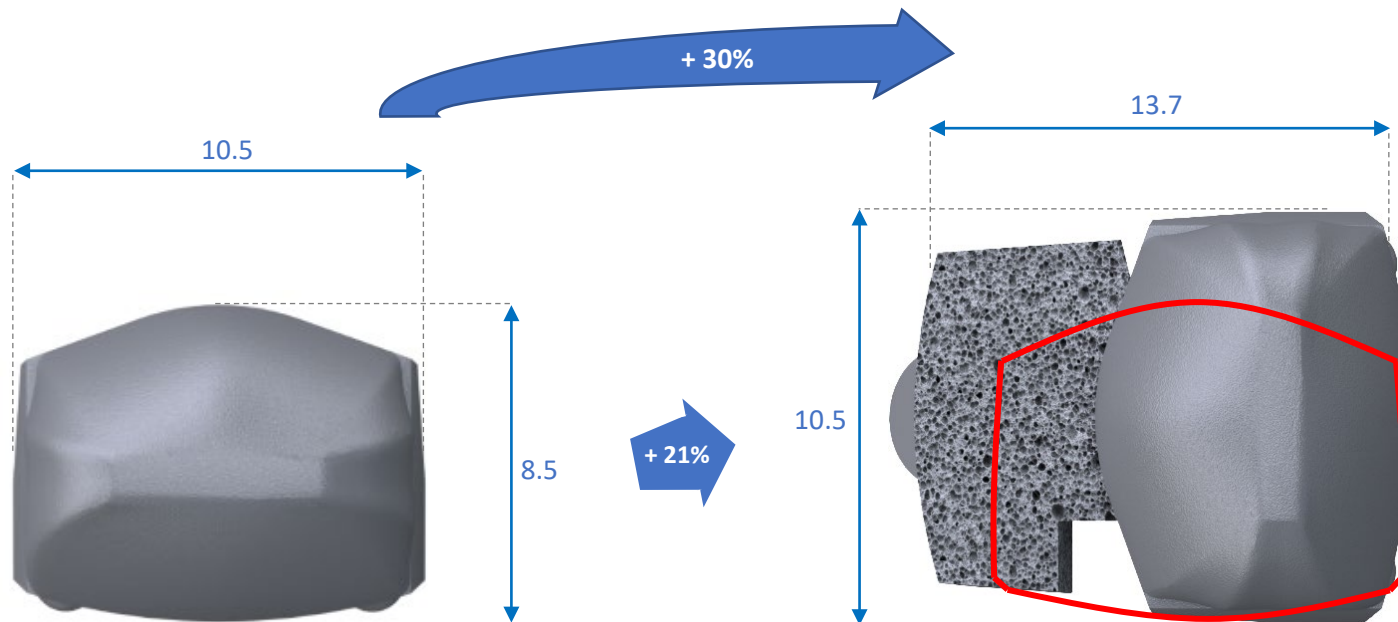
Expanding in 2 dimensions

The **DUO** Expandable Cages: overview



The DUO Cages: 2D expansion

- Expands in height and width
 - The width of the stowed cage represents the height of the deployed cage
 - The height of the stowed cage represents approx. 40% the width of the deployed cage
- Example of a TLIF cage:



The **DUO** Cages: insertion

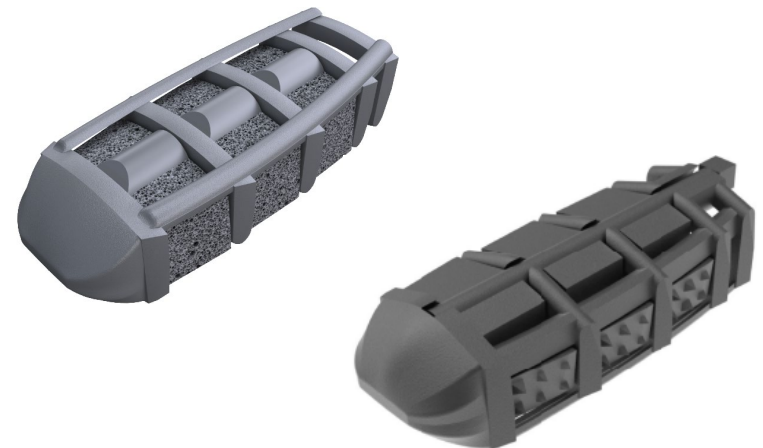
- Classic insertion:

- Following standard surgical approaches
- Standard width
- Shorter height



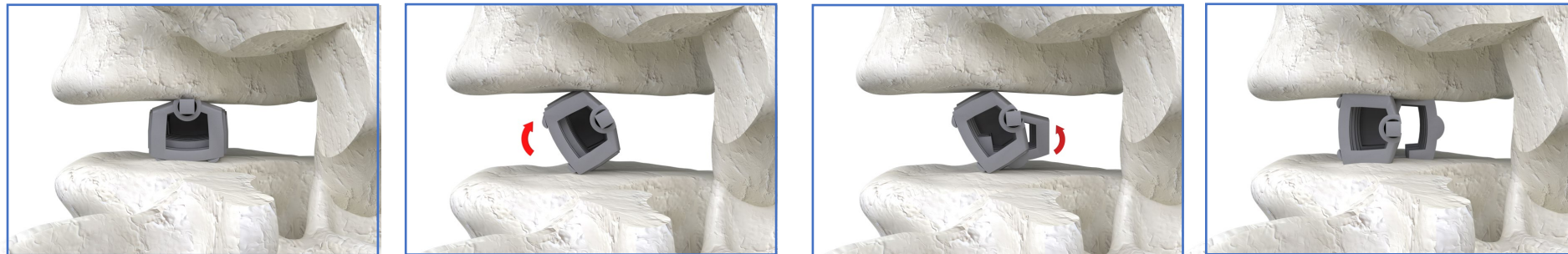
- Smooth & atraumatic insertion

- Cages glide on blunted surfaces (both sides)
- Endplates are shielded from rough material & anchoring means
- Speedy insertion and precise trajectory
- Easier repositioning



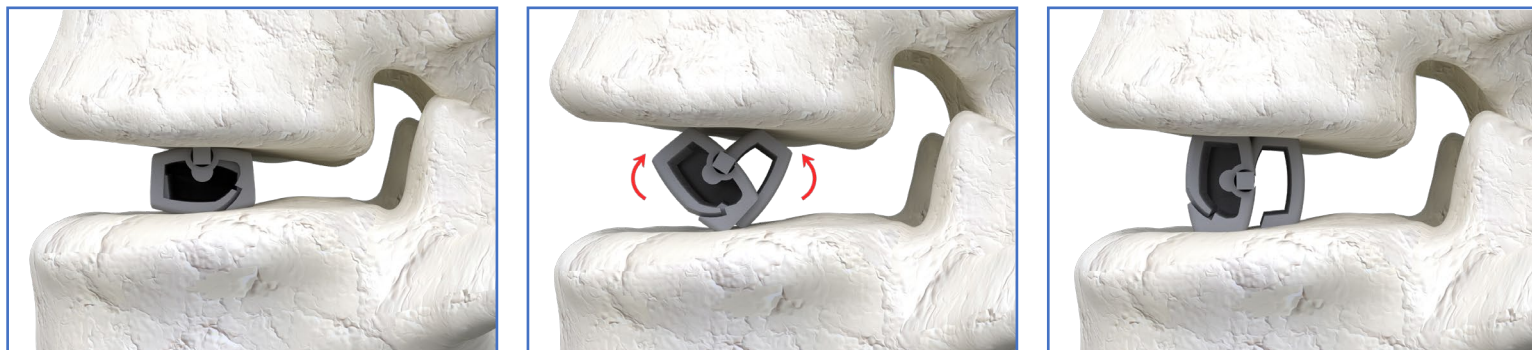
The **DUO** Cages: deployment

- Simple, atraumatic and predictable deployment
- Two alternative methods of deployment:
 - The body is pivoted 80° to distract the vertebrae; the extension is then deployed 90° and the body is further pivoted 10° to complete its 90° rotation



<https://www.youtube.com/watch?v=jkjh-962aLc>

- ... or two simultaneous opposing pivoting of 90°

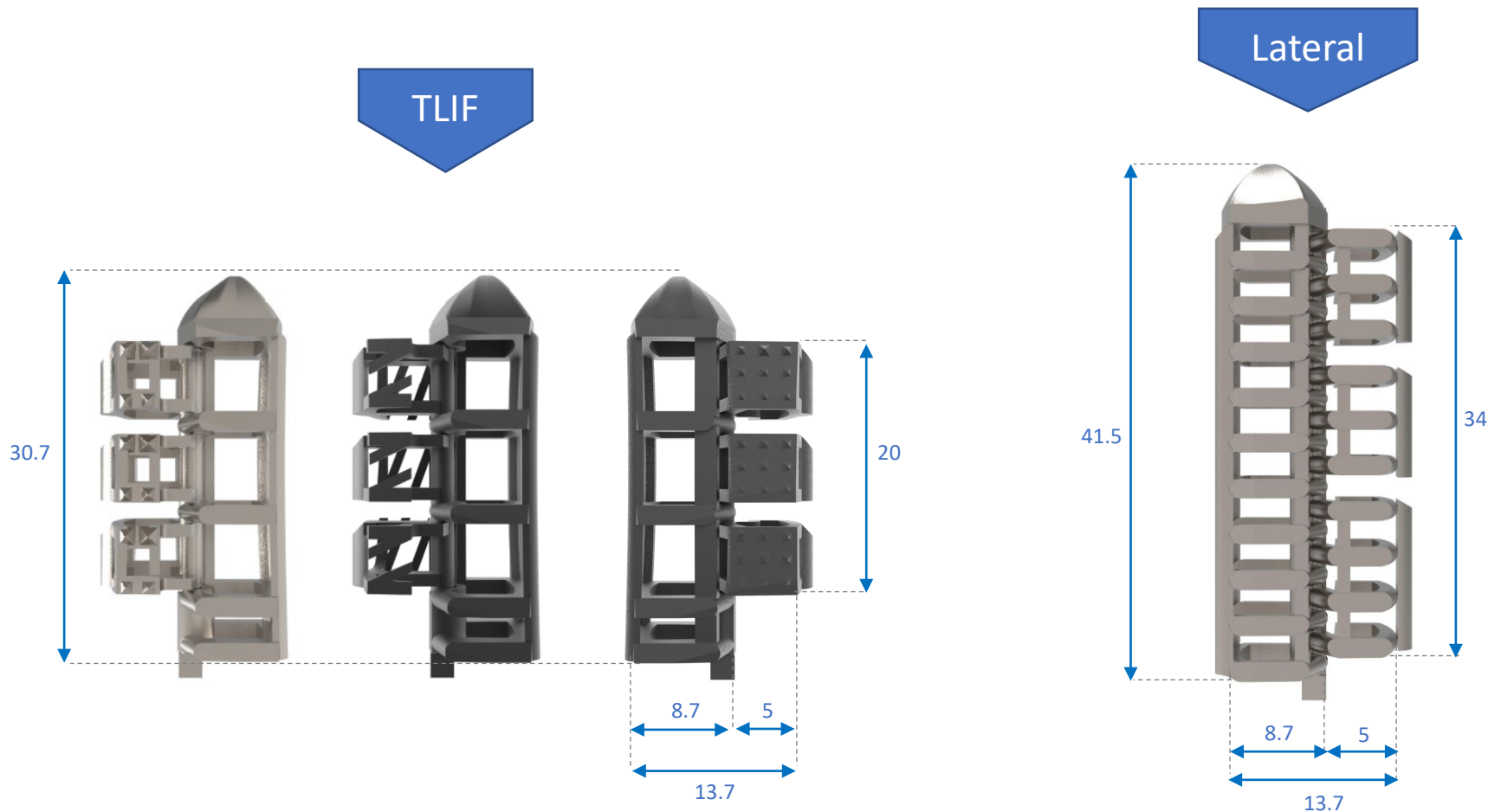


<https://www.youtube.com/watch?v=We3M2guSUYY>

- The implant self-locks after completion of deployment

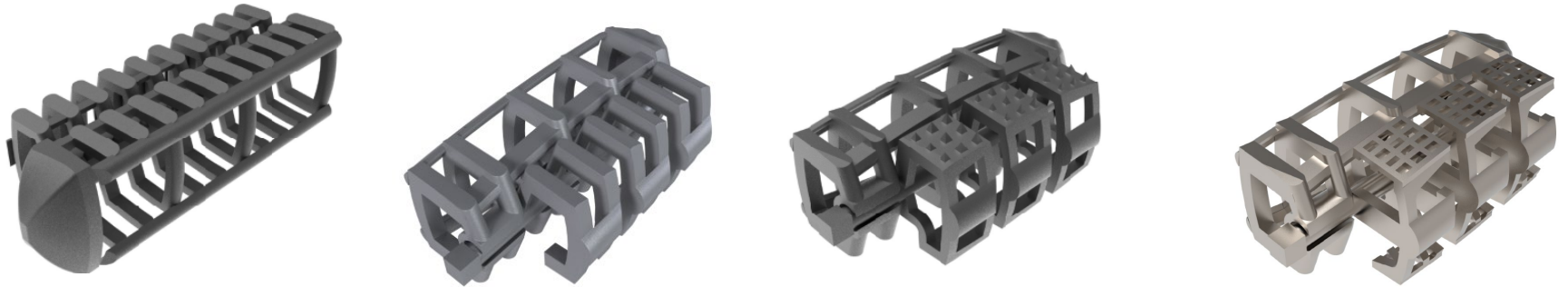
The **DUO** Cages: extended footprint

- Widened & homogenous footprint for better load sharing
- Examples of extended footprints:

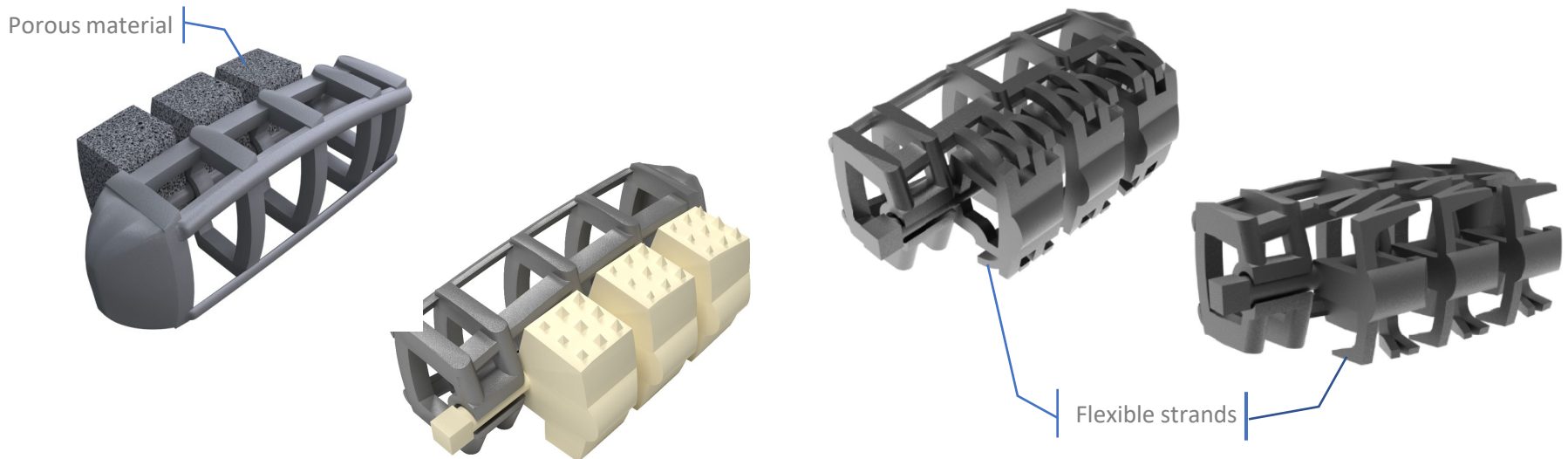


The **DUO** Cages: flexibility in choices

- Multiple choices of structures and materials



- Hybrid cages: the cage-body as carrier for extensions with added functionalities



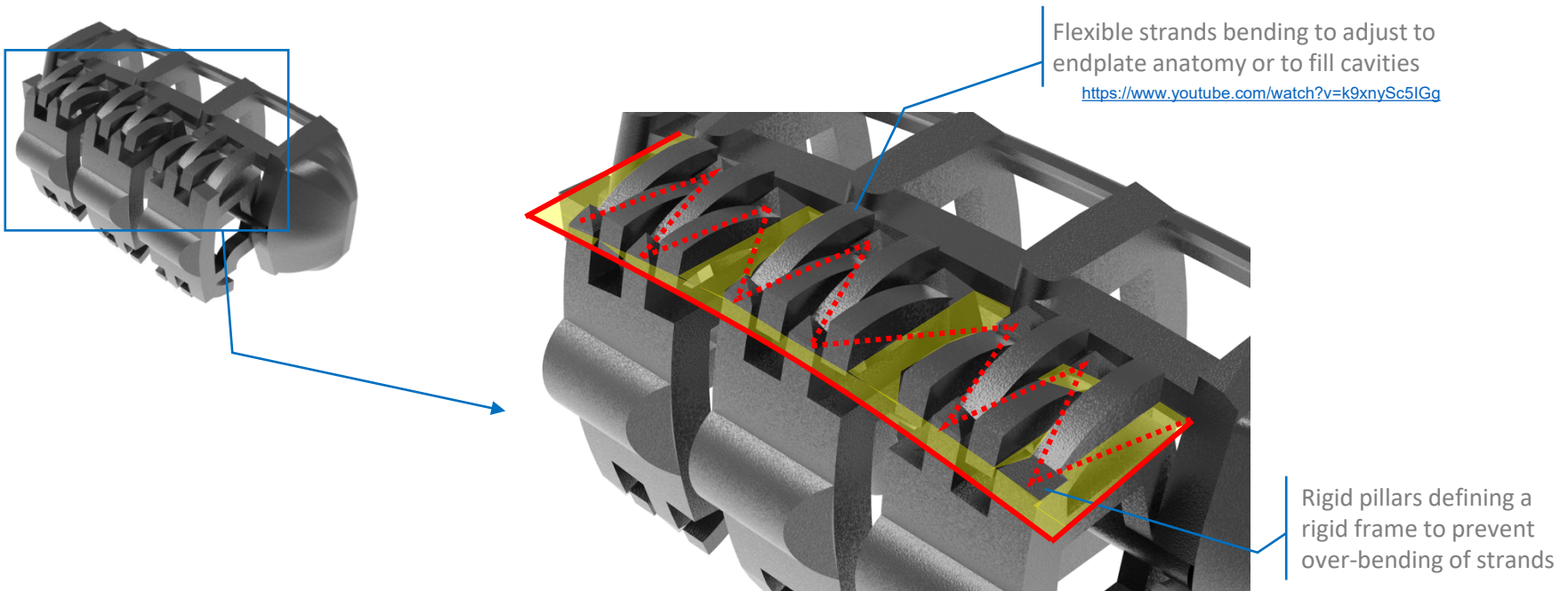
The **DUO** Cages: “soft” surfaces

- A flexible structure on the extension for improved homogeneity of load sharing

- dampening of compression force
- micro-movements
- increased adhesion to endplates

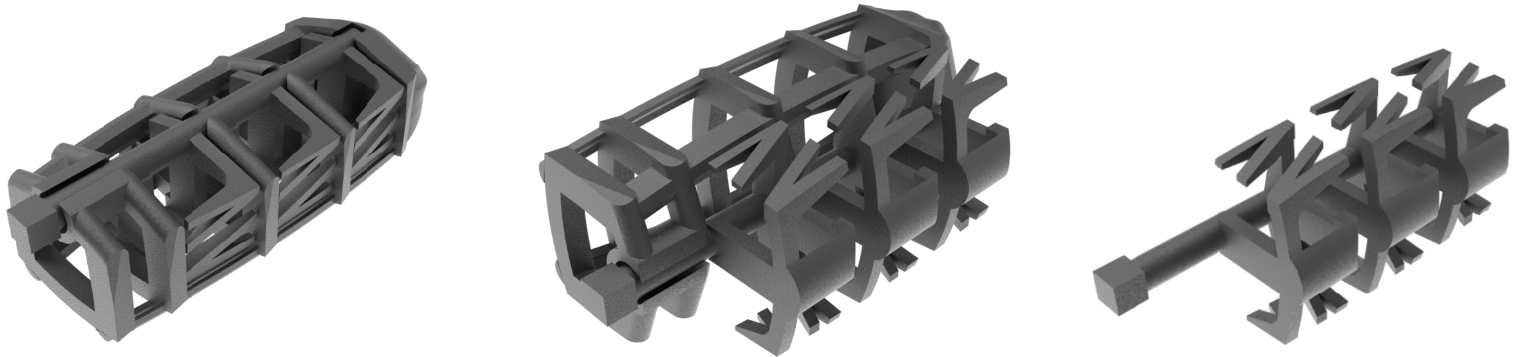
Endplates Protection
&
Accelerated Fusion

- The example of one flexible structure mechanism:

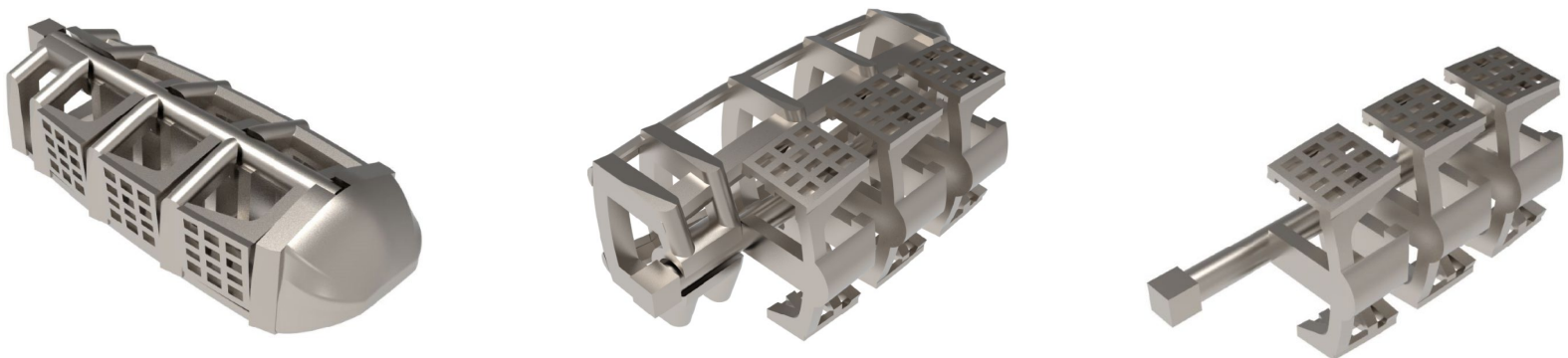


The **DUO** Cages: “soft” surfaces (Cont’d)

- The frame of the cage-body is a carrier for flexible heterogenous structures during delivery. The frame shields the stowed extensions and the endplates

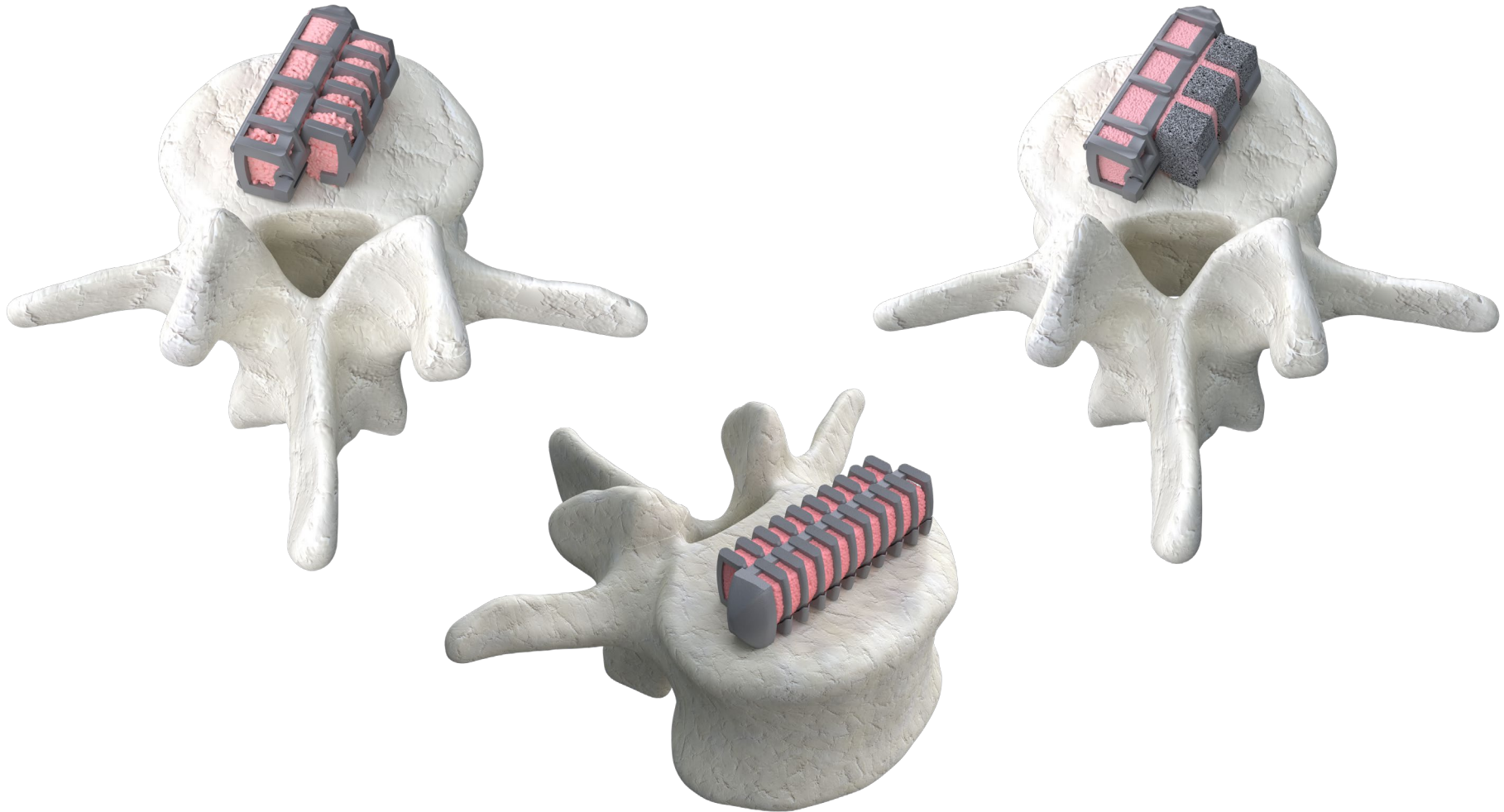


- Flexible strands covered by mesh to reinforce structure and improve load sharing



The **DUO** Cages: large graft windows

- Important volumes for graft material



The **DUO** Cages: benefits summary

